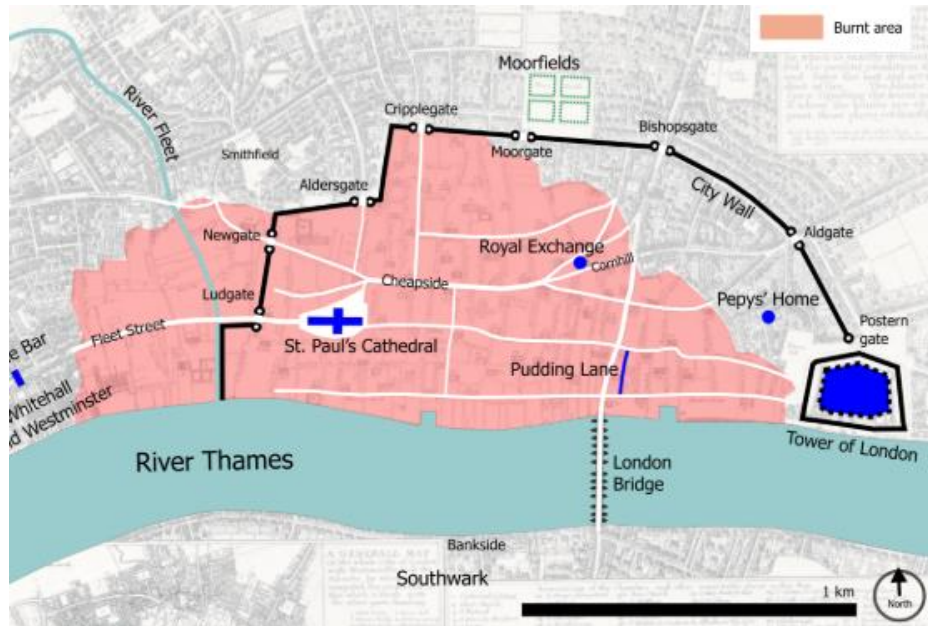


## Knowledge Organiser Y1 Spring – Fire of London, Time Travellers



### Key Locations

UK  
England  
London  
Pudding Lane  
The River Thames

### Key Dates

**Sunday 2<sup>nd</sup> September 1666** –  
The Great Fire of London  
started

**Thursday 6<sup>th</sup> September 1666** –  
The Great Fire of London  
ended

### Vocabulary

#### History

Pudding lane  
St Paul's Cathedral  
London  
record

#### Geography

London  
capital city  
River Thames  
St Paul's Cathedral  
The United Kingdom (UK)

#### Science

flammable / non-flammable  
strong / strength  
weak / weakness  
materials

#### Art

colour  
pattern

### Key Definitions

**Artist** - a person who creates paintings or drawings as a profession or hobby.

**Chronological** - following the order in which events occurred.

**Diary** - a book in which one keeps a daily record of events and experiences.

**Flammable** - easily set on fire.

**Material** - the thing from which an object is or can be made.

**Non-flammable** – not easily set on fire.

**Pattern** - a repeated decorative design.

**Recount** - giving an account of an event or experience.

**Strong** - able to withstand force, pressure, or wear.

### Important People

**King Charles II** – King of England at the time of The Great Fire of London

**Sir Thomas Bloodworth** – Lord Mayor of London at the time of the fire

**Samuel Pepys** – Famous for his diary accounts of the fire

**Thomas Farriner** – Bakery owner on Pudding Lane at the time of the fire

**Christopher Wren** – Designed the new St Paul's Cathedral after the fire

**Thomas Wyck** – Artist who painted images of the fire

**Jan Griffier** - Artist who painted images of the fire



#### September 2<sup>nd</sup> 1666:

Fire starts in Thomas Farriner's bakery.

#### September 2<sup>nd</sup> 1666:

Samuel Pepys goes to tell the king about the fire.

#### September 3<sup>rd</sup> 1666:

Houses pulled down to stop fire spreading to The Tower of London.

#### September 4<sup>th</sup> 1666:

St Paul's Cathedral catches fire.

#### September 5<sup>th</sup> 1666:

Houses blown up to stop fire spreading.

#### September 6<sup>th</sup> 1666:

The fire is finally extinguished.